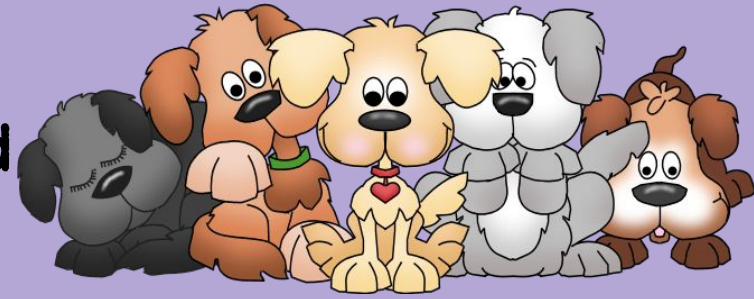




October 30th - November 3rd



## MATH

- ★ We will begin multi-digit multiplication.
- ★ We will continue learning about Factors and Multiples.

Vocabulary to Know:

- 1.addends
- 2.sum
- 3.difference
- 4.factor
- 5.multiple

## Google Apps

- ★ We will continue working on Google Docs.

## IMPORTANT REMINDERS:

- ★ Act 80 Day - NO SCHOOL for Students: November 3rd
- ★ Read-a-Thon: November 1st-10th (Money Due November 17th) 📅
- ★ Please continue to check the Daily Folder and Planner for important information !

# Mrs. Wilson's LESSON PLANS

Week of October 30th – November 3rd

\*Lesson Plans are Subject to Change\*



	MONDAY October 30th 1 A	TUESDAY October 31st 2 B	WEDNESDAY November 1st 3 C	THURSDAY November 2nd 4 A	FRIDAY November 3rd
MATH	<p>O:TSWBAT -Use strategies to multiply 4 digit and 3 digit numbers by 1 digit. -Identify factors and GCF.</p> <p>A:</p> <ul style="list-style-type: none"> <li>★ Mad Minutes</li> <li>★ POTD</li> <li>★ Area Model</li> <li>★ GCF</li> </ul> <p>E: student responses</p>	<p>O:TSWBAT -Use strategies to multiply 4 digit and 3 digit numbers by 1 digit. -Identify factors and GCF.</p> <p>A:</p> <ul style="list-style-type: none"> <li>★ Mad Minutes</li> <li>★ POTD</li> <li>★ Partial Products</li> <li>★ GCF</li> </ul> <p>E: student responses</p>	<p>O:TSWBAT -Use strategies to multiply 4 digit and 3 digit numbers by 1 digit. -Identify factors and GCF.</p> <p>A:</p> <ul style="list-style-type: none"> <li>★ Mad Minutes</li> <li>★ POTD</li> <li>★ Standard Algorithm</li> <li>★ GCF</li> </ul> <p>E: student responses</p>	<p>O:TSWBAT -Use strategies to multiply 4 digit and 3 digit numbers by 1 digit. -Identify factors and GCF.</p> <p>A:</p> <ul style="list-style-type: none"> <li>★ Mad Minutes</li> <li>★ POTD</li> <li>★ Standard Algorithm</li> <li>★ GCF</li> </ul> <p>E: student responses</p>	<h2>No School! Act 80 Day</h2>
Google Apps	<p>O:TSWBAT gain understanding of Google Apps.</p> <p>A:</p> <ul style="list-style-type: none"> <li>★ Google Docs</li> </ul> <p>E: student participation</p>	<p>O:TSWBAT gain understanding of Google Apps.</p> <p>A:</p> <ul style="list-style-type: none"> <li>★ Google Docs</li> </ul> <p>E: student participation</p>	<p>O:TSWBAT gain understanding of Google Apps.</p> <p>A:</p> <ul style="list-style-type: none"> <li>★ Google Docs</li> </ul> <p>E: student participation</p>	<p>O:TSWBAT gain understanding of Google Apps.</p> <p>A:</p> <ul style="list-style-type: none"> <li>★ Google Docs</li> </ul> <p>E: student participation</p>	

\*Lesson Plans meet requirements of the Rockwood Area School District Curriculum & PA State Standards for 4th Grade.

\*Accommodations & Modifications included but not limited to: follow IEPs & GIEPS, differentiated instruction, preferential seating, opportunities for intervention or enrichment, & challenge activities at teacher's discretion.